

**Never doubt that a small group of  
thoughtful concerned citizens  
can change the world.**

**Indeed it is the only thing  
that ever has.**

**- Margaret Mead**

# **Goal of Williams/Transco for the Northeast Supply “Enhancement” Project (NESE)**

**Deliver 400 million cubic feet  
of natural gas to NYC per day**

**Williams/Transco already has a commitment  
from National Gas to buy this gas.**

**In Pennsylvania, they plan to add:**

- **a 10-mile, 42-inch pipeline loop of Mainline D in Lancaster County, PA; and**
- **a 21,902 horsepower electric-powered compressor unit at STA200, Chester County, PA (where there’s already 13 compressor units)**

# **NORTHEAST SUPPLY ENHANCEMENT PROJECT: DESCRIPTION OF PROPOSED FACILITIES IN NJ**

## **PIPELINES**

### **Raritan Bay Loop**

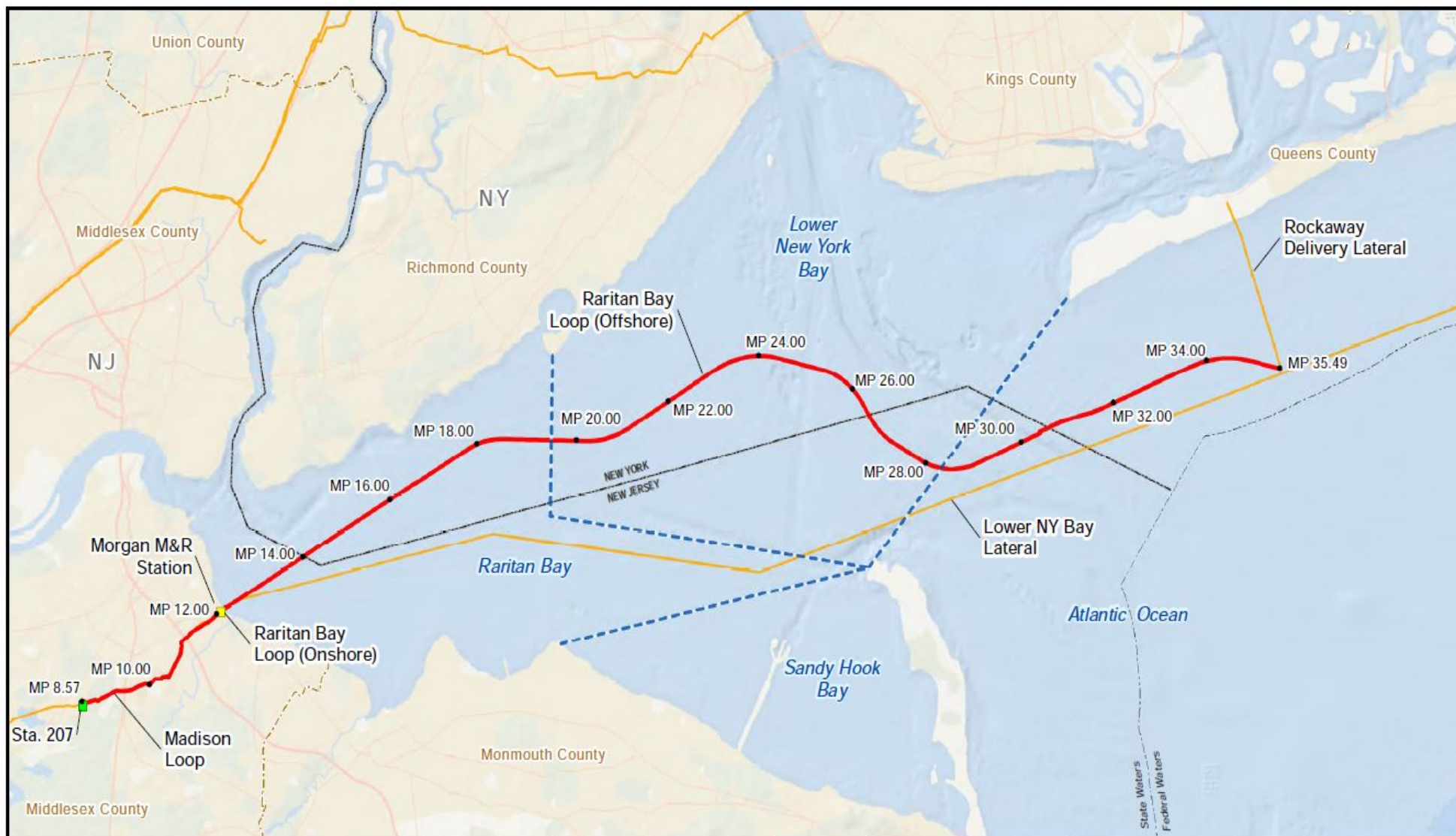
#### **Sayreville, NJ into Raritan Bay**

**23.49-mile**, 26-inch loop (0.16 mile onshore and 23.33 miles offshore) of Transco's Lower New York Bay Lateral from Mile Post 12.00, southwest of the Morgan Meter & Regulator (M&R) Station in Sayreville, NJ to the Rockaway Transfer Point in New York State waters

### **Madison Loop**

#### **Old Bridge & Sayreville, NJ**

**3.43-mile**, 26-inch loop of Transco's Lower New York Bay Lateral from Compressor Station 207 at Mile Post 8.57 to Mile Post 12.00, southwest of the Morgan M&R Station + a new "pig" launcher/receiver



#### Legend

- Milepost
- Existing Compressor Station
- Existing Meter & Regulating Station
- Proposed Pipeline
- Existing Pipeline
- County Boundary
- NY/NJ State Boundary
- State/Federal Offshore Line
- Approximate Offshore Waterbody Boundary



DRAWING NO.			REFERENCE TITLE		
			A-16		
NO.	DATE	BY	REVISION DESCRIPTION	NO.	CHK.
A	3/23/2017	DM	ISSUED FOR FERC FILING	1000891	MK
B	6/1/2017	RH	ISSUED FOR FERC SUPPLEMENTAL FILING	1000891	MK

TRANSCONTINENTAL GAS PIPE LINE COMPANY LLC  
OFFSHORE WATERBODIES  
NORTHEAST SUPPLY ENHANCEMENT PROJECT  
NEW JERSEY, NEW YORK



DRAWN BY: RH	DATE: 6/1/2017	ISSUE FOR BID: N/A	SCALE: 1:115,000
CHECKED BY: MK	DATE: 6/1/2017	ISSUE FOR CONSTRUCTION: N/A	Project features verify
APPROVED BY:	DATE:	DRAWING NUMBER: 1000891	FIGURE A-21

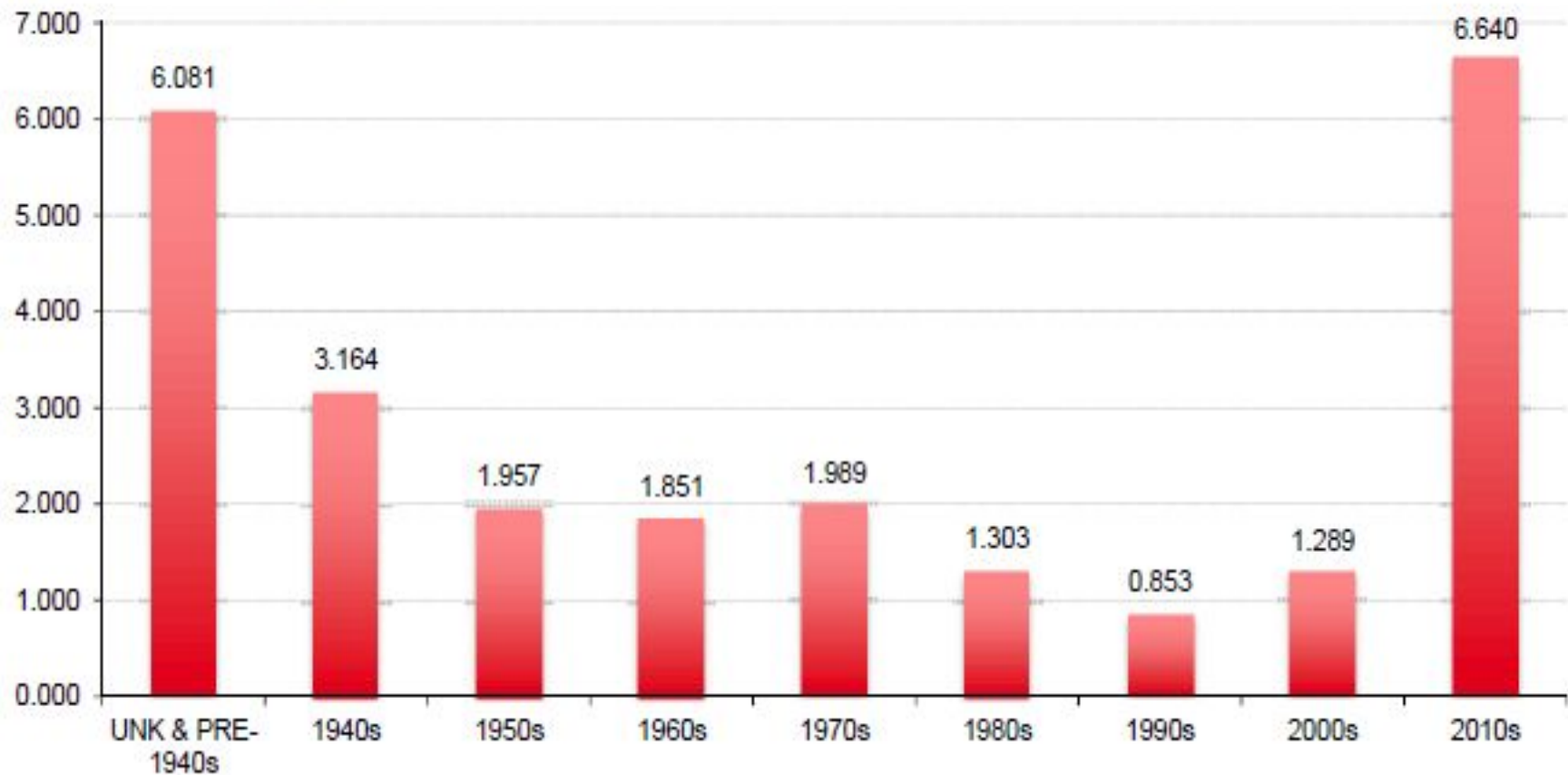
## **Nearby Landfills & Contaminated Sites**

- **Road Department Garage Area 3-1 along Route 9**
- **Global Sanitary Landfill & Sommers Landfill** (Ernst Rd.)
- **Cheesequake Compost Site**
- **Morgan Ordnance Depot**  
(contaminated area between Rt. 9 & Raritan Bay shoreline)
- **Gas Station at 1788 Rt. 35 in Sayreville** (active remediation)
- **Morgan Fire House in Sayreville**
- **E.I. Dupont Denemours Site**  
(groundwater area overlapping Madison Loop:  
potential for further investigation)

## **Superfund Site**

- **Raritan Bay Slag Superfund Site Areas 7 & 11**

**Average number of annual incidents over 2005-2013 per 10,000 miles of onshore gas transmission pipe by decade of pipe installation**



As of March 2015.

Sources: U.S. Pipeline and Hazardous Materials Safety Administration, Pipeline Safety Trust

# **NORTHEAST SUPPLY ENHANCEMENT PROJECT: DESCRIPTION OF PROPOSED FACILITIES IN NJ**

## **C O M P R E S S I O N**

### **Compressor Station 206**

#### **Franklin Township (Somerset County)**

**new compressor station near Transco's mainline,  
consisting of two natural gas-powered turbine-driven  
compressor units on a 52-acre lot**

**total horsepower: 32,000**

**Two 50-foot smokestacks where:**

- **exhaust exits at 210,000 cubic feet per minute**
- **exit temperature is 849.2 degrees Fahrenheit**
- **Per Hour Release: 13 pounds of Carbon Monoxide**



## Compressor Station 207 – Old Bridge





# Compressor Station 207 – Old Bridge



# **Further Expansion in Old Bridge?**

## **Compressor Station 207 in Old Bridge**

**Electric – Currently = 26,400 horsepower**

**2006 new 10,000 horsepower**

**2013 addition 5,400 horsepower**

**2015 addition 11,000 horsepower**

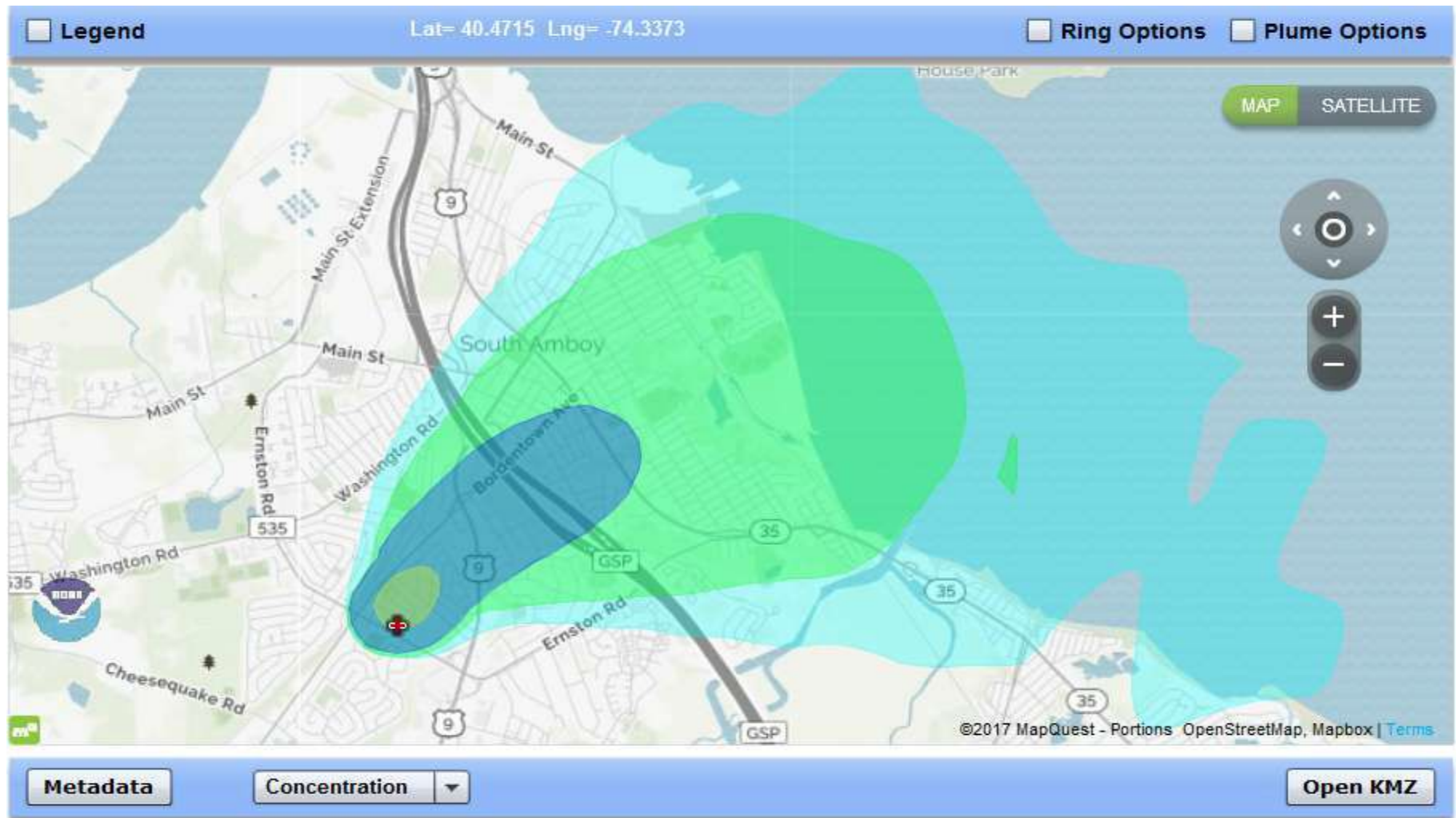
**Note:** Transco bought the 33+ acre parcel of land next to this site in October 2016 for over \$ 6 million.



# *Where Does Pollution Go?*

June 1, 2017 Noon

NOAA results of release set to the coordinates  
provided: 40.45774, ---74.30246



# *Where does Pollution Go?*

June 1, 2017 8pm



# Acres Affected by Construction of NESE

## ONSHORE = 332 acres

Madison Loop	57.2	NJ
Raritan Bay Loop (onshore)	8.4	NJ
Quarryville Loop	207.8	PA
Compressor Station 206	30.1	NJ
Compressor Station 200	28.9	PA

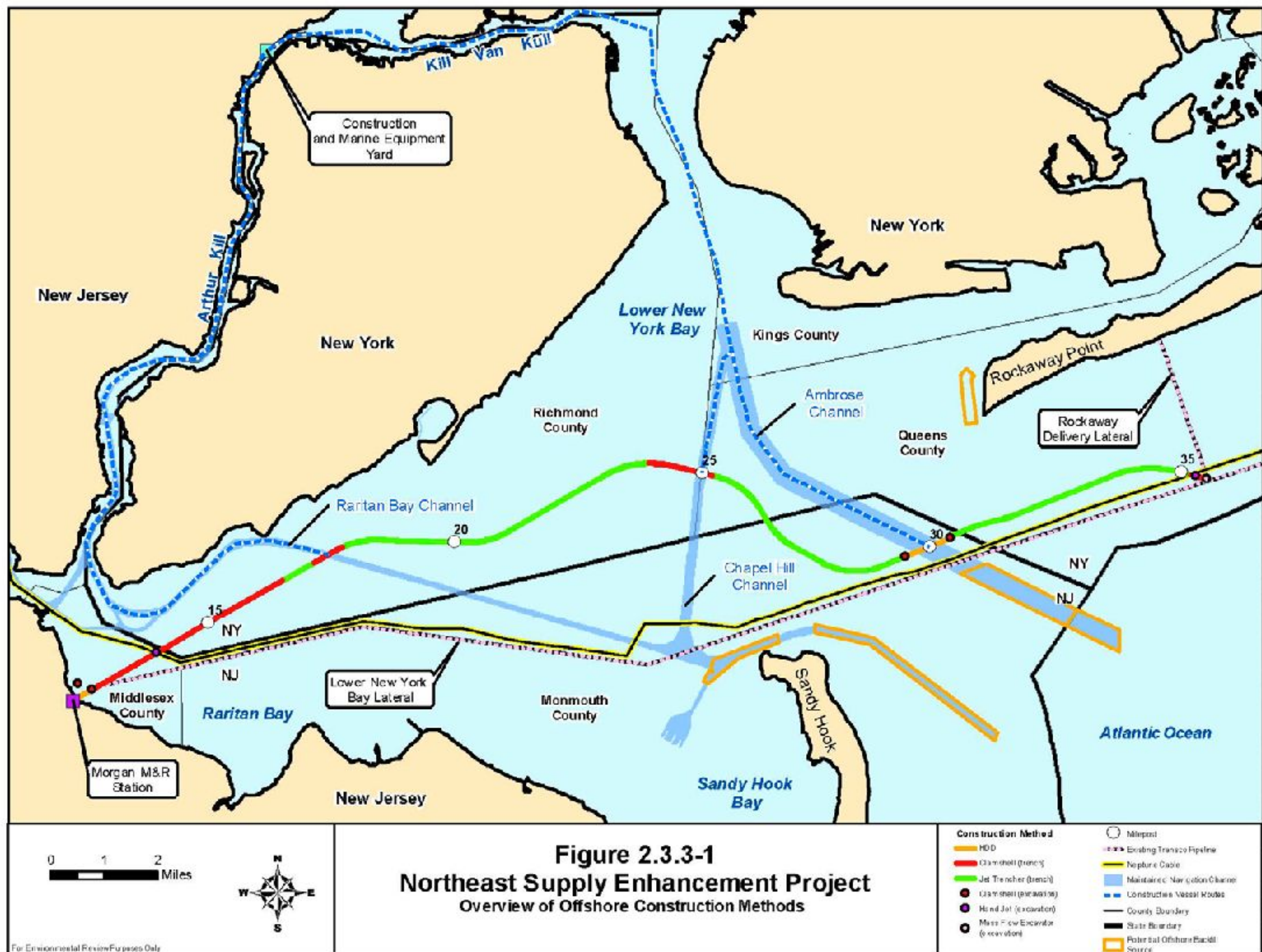
## OFFSHORE = 15,585.7 acres (workspace)

New Jersey	4,427.8	New York	10,922.2
		Federal	235.7

**117.2 acres of seafloor** = directly impacted by pipeline installation & anchoring

Offshore Construction for 9 months - 24/7





# TIMELINE

## Past

Resource Reports	November 2016
Application to FERC	March 27, 2017
State Permit Applications	Jan. to July 2017
Draft Environmental Impact Statement	March 23, 2018

**Last Day to Intervene or officially send comments to FERC**  
**May 14, 2018**

## Future (anticipated)

Final Environmental Impact Statement	<b>Sept. 17, 2018</b>
FERC's Order of Public Convenience & Necessity	<b>Dec. 16, 2018</b>
State Permits & FERC Notice to Proceed	<b>late 2018</b>
—	<b>early 2019</b>

# Reports to or by FERC

Williams/Transco prepares

**12 Resource Reports:**

Drafts (November 22, 2016),  
Application (March 27, 2017),  
& Supplemental Information  
filed since then.

FERC prepared a **Draft  
Environmental Impact Statement**  
from these **(March 23, 2018)** &  
**will write the Final  
Environmental Impact Statement  
(Sept. 17, 2018).**

**Details are often not  
viewable by the  
public.**

Aspects of these reports are  
filed as **“privileged”**

(studies, surveys, some  
agency consultation)

or they are considered to be  
**“critical energy  
infrastructure information”**

(engineering designs)

## **Federal Permits from:**

- U.S. Army Corps of Engineers
- National Oceanic and Atmospheric Administration – National Marine Fisheries Service (NOAA Fisheries)
- U.S. Environmental Protection Agency

## **New Jersey State Permits from:**

- NJDEP Land Use Regulation Program
- NJDEP Coastal Management Program
- NJDEP Division of Water Quality
- NJDEP Division of Water Quality – Bureau of Nonpoint Pollution Control
- NJDEP Division of Water Quality – Bureau of Water Allocation
- NJDEP Bureau of Stationary Sources

## **New Jersey Local Permits from:**

- Freehold Soil Conservation District
- Somerset-Union Soil Conservation District

# **Current Applications Submitted to NJDEP**

## **Air Quality Permit for CS206**

(submitted January 2017; granted September 2017)

**Flood Hazard Area Permits:** Verification &  
Individual Permits (June 2017)

**Freshwater Wetlands:** Individual Permit  
(June 2017)

**Coastal Wetlands & Waterfront  
Development Permits:** for Madison Loop  
(July 2017)

**Transco expects to receive all permits by  
Sept. 2018 to early 2019.**



## **Typical FERC Conclusion** **in their Certificate of** **Public Convenience & Necessity**

. . . we agree with the conclusions presented in the FEIS and find that the project, if constructed and operated as described in the EA, and in compliance with the environmental conditions in the appendix to this order, **does not constitute a major federal action significantly affecting the quality of the human environment.**

- This should stipulate that Williams/Transco needs to obtain all required permits from the Federal & State authorities before construction.
- FERC's **Notice to Proceed with Construction** is usually not given until all state permits have been obtained.

## **Projects have been stopped due to intense opposition by citizens:**

- **Bluegrass NGL Pipeline (Kentucky) 2014**
- **Northeast Energy Direct (PA, NY & Massachusetts) 2016**
- **Access Northeast Project (Massachusetts) 2017**

## **Projects have been stopped at the State level when they do not issue needed Water Permits after FERC gave the Certificate of Public Convenience & Necessity:**

- **Islander East (New York & Connecticut) 2005**
- **Constitution Pipeline (New York) 2016**
- **Northern Access Project (New York) 2017**

**Impossible is just a word thrown around by small men who find it easier to live in the world that they've been given than to explore the power they have to change it.**

**Impossible is not a fact, it's an opinion.**

**Impossible is potential.**

**Impossible is temporary.**

**Impossible is nothing.**

**- Muhammad Ali**

# Where We Are

## Numbers

- Intervenors = over 2,400
- Letters to NJDEP for hearings = over 700
- Comments to FERC = over 450 (since Application)

### NOTES:

FERC counts numbers.

Comments should be specific concerns & include requests – one topic at a time.

## Resolutions in Opposition

- South Brunswick
- Franklin Township
- Montgomery
- Princeton
- Somerset Co. Freeholders

### NOTE:

These do not stop NESE, but they add credibility.

# **CITIZEN INVOLVEMENT & VOICES MATTER**

- **Sign up as an Intervenor, and encourage friends & neighbors to do the same.**
- **Become involved with local groups opposing NESE, and share your expertise.**
- **Let your elected & appointed representatives know your concerns.**
- **Encourage local officials to become Intervenors & send comments to FERC & NJDEP.**
- **Tell your friends & neighbors about this.**
- **Write letters to the editor in local newspapers.**
- **Call NJDEP to register your opposition to Williams/Transco's application for permits.**



**Perth Amboy photographer James Irwin spotted a humpback whale frolicking and feeding on bunkers in Raritan Bay on Thursday morning, November 17, 2016.**



**Even if you're on the right track,  
you'll get run over if you just sit there.**

**- Will Rogers**

**Show up at the FERC “Public”  
Comment Meeting**

**April 25, 2018**

**Anytime between 5PM - 9PM**

**George Bush Senior Center**

**Old Bridge**

# Questions?



**Franklin Township Task Force on CS 206 & NESE**

**[www.scrap-NESE.org](http://www.scrap-NESE.org)**