

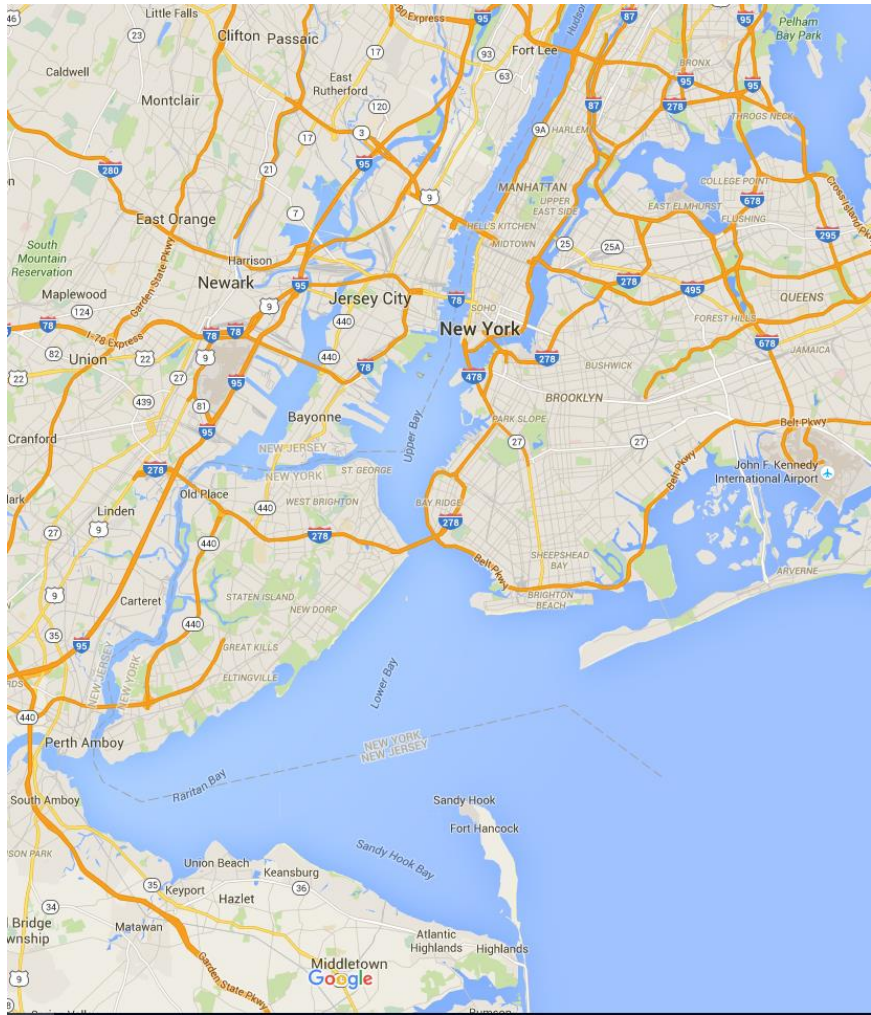
# Impact of Williams Transco NESE on Raritan Bay

Debbie Mans, Baykeeper & Executive  
Director  
NY/NJ Baykeeper



"NY/NJ Baykeeper's mission is to protect, preserve, and restore the NY-NJ Harbor Estuary."





# NY-NJ Harbor Estuary

# “Nurseries of the Ocean”

- Wetlands, eelgrass
- Menhaden, Bluefish, Summer Flounder, Striped Bass, American eel, Atlantic sturgeon
- Habitat for shellfish, crabs, lobsters, and waterbirds
- Coastal and Maritime Forests

**Comprehensive Restoration Plan developed**

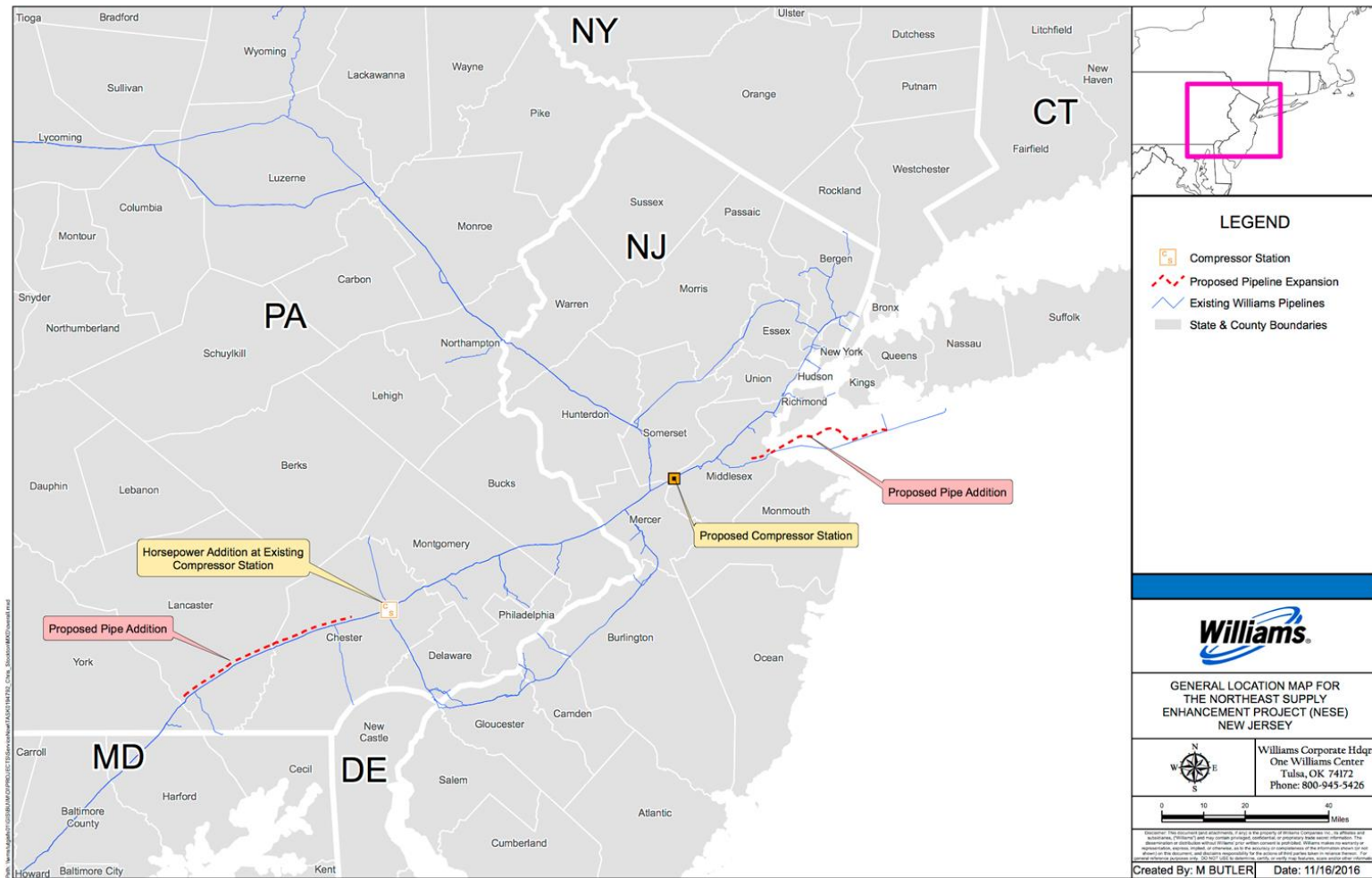
# Recreational Value

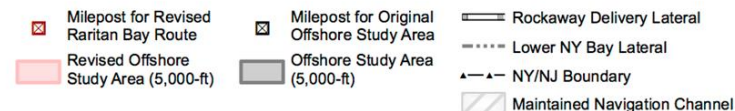
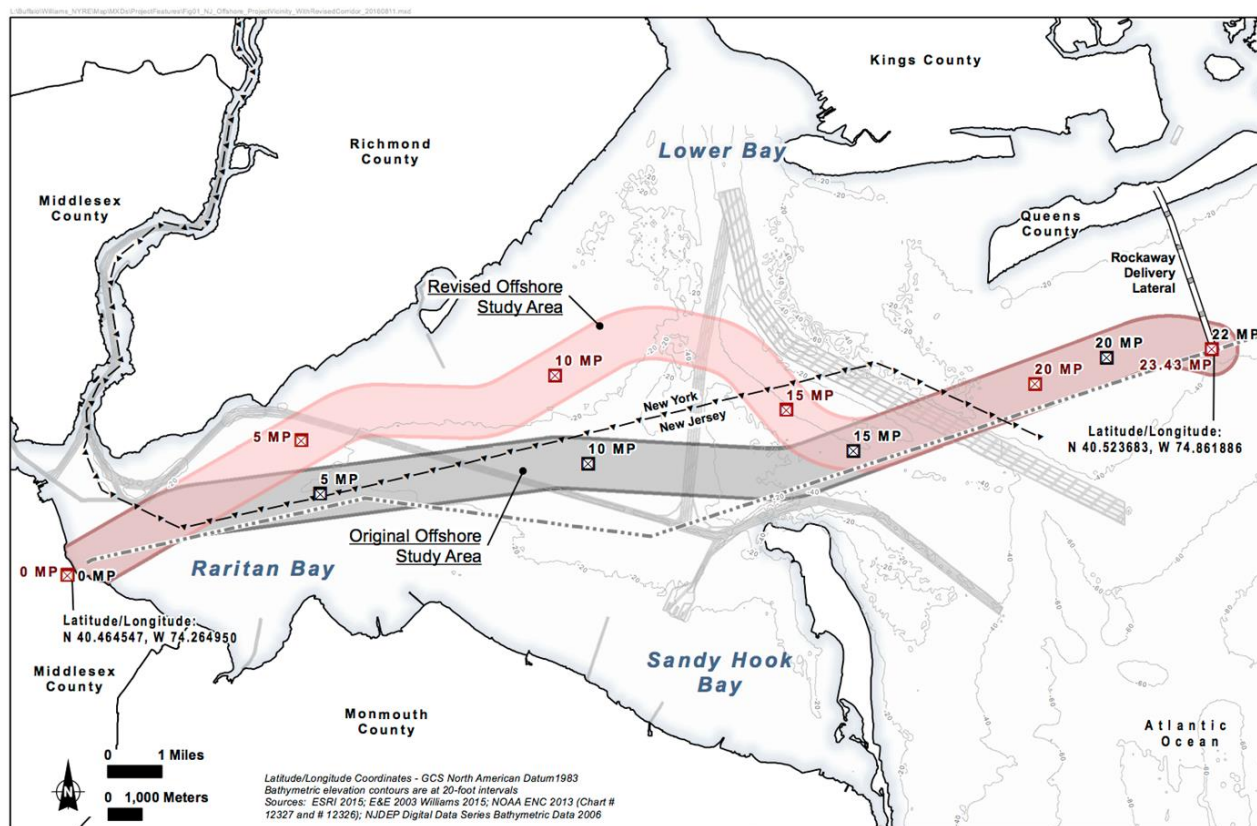






Commercial Clamming Industry





**Figure 1:**  
**Raritan Bay and Lower New York Bay**  
**Vicinity Map**  
 New Jersey, New York



# Construction Techniques

Depending on depth:

Horizontal directional drilling (landside and shipping channels)

Clamshell bucket dredge (to 20' water depth)

jet sled (suction and spray) or plow

26" pipe with a 2" concrete sleeve

Trench (testing design)

38-50' bottom with either 2:1 or 3:1 slope

Backfill trench or casting material to the side

NATIONAL  
GEOGRAPHIC

SECONDS FROM DISASTER  
NEW SERIES TOM 9PM



# Potential impacts

Disruption (temporary and permanent) to fishing, boating and recreational activities

Impacts (temporary and permanent) to habitat for clams, horseshoe crabs, fish and other marine animals, including endangered marine species

Public access to waterfront and bay

Commercial shipping industry

Anchorage

Contaminated sediment concerns

# Need full Environmental Impact Statement (EIS)

Survey information on benthic resources not included in Resources Report

Offshore route of the pipeline crosses designated Essential Fish Habitat (EFH) for 26 species (additional information on EFH to be included in Transco's Application)

Impacts to threatened and endangered species

Need further information on temporary, permanent and indirect impacts

Exact acreages of impacts

# Additional Considerations

This is a step backwards for our energy policy and the environment by committing the region to more fossil fuel infrastructure projects that may be unnecessary or make it more difficult for renewables to enter the market.

Exacerbates climate change

Need to look at the cumulative impacts of this project and other pipeline projects



# Questions?

## Visit:

[www.nynjbaykeeper.org](http://www.nynjbaykeeper.org)

Debbie Mans, Executive Director  
NY/NJ Baykeeper  
52 West Front Street  
Keyport, New Jersey 07735

732-888-9870

[debbie@nynjbaykeeper.org](mailto:debbie@nynjbaykeeper.org)

@NYNJBaykeeper

