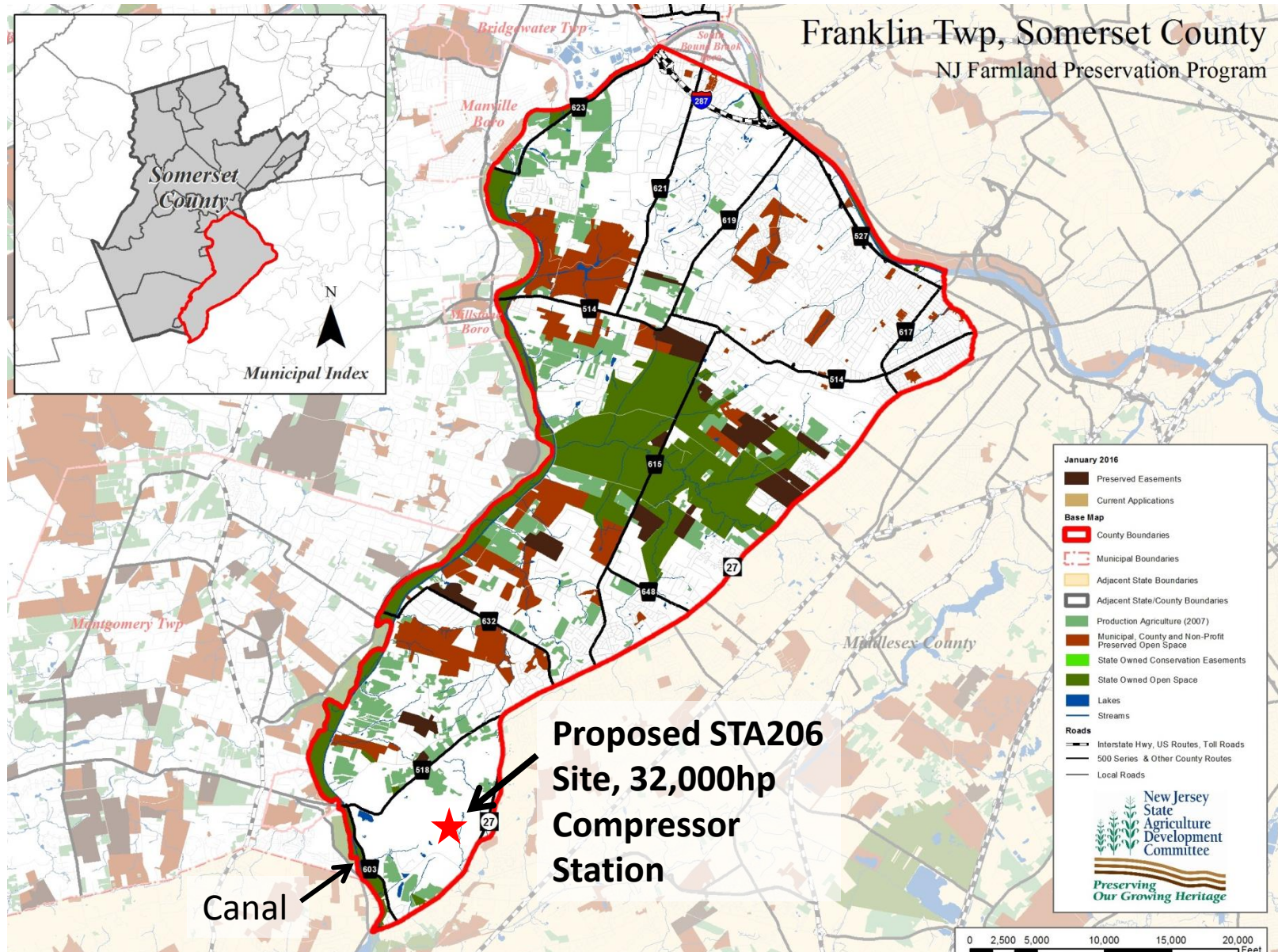


2/27/2017

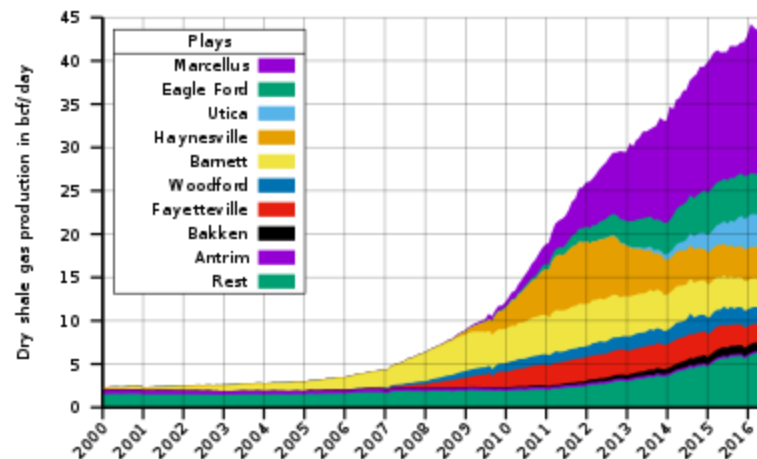
Franklin Township Task Force

Steering Committee – Part 1: Introduction



FTTF Steering Committee

- Introduction
- Williams Projects
- NESE Project
- FERC Timeline
- Big Picture



Compressor Stations

- **Compressor stations have 2 main functions *1**

- Natural Gas compression to increase pressure
- Natural Gas chilling / cooling

- **Frequency of compressor stations *2**

The total number of compressor station facilities required to move product varies depending on the region and conditions. Generally compressor stations are located about every 40-70 miles along the pipeline.

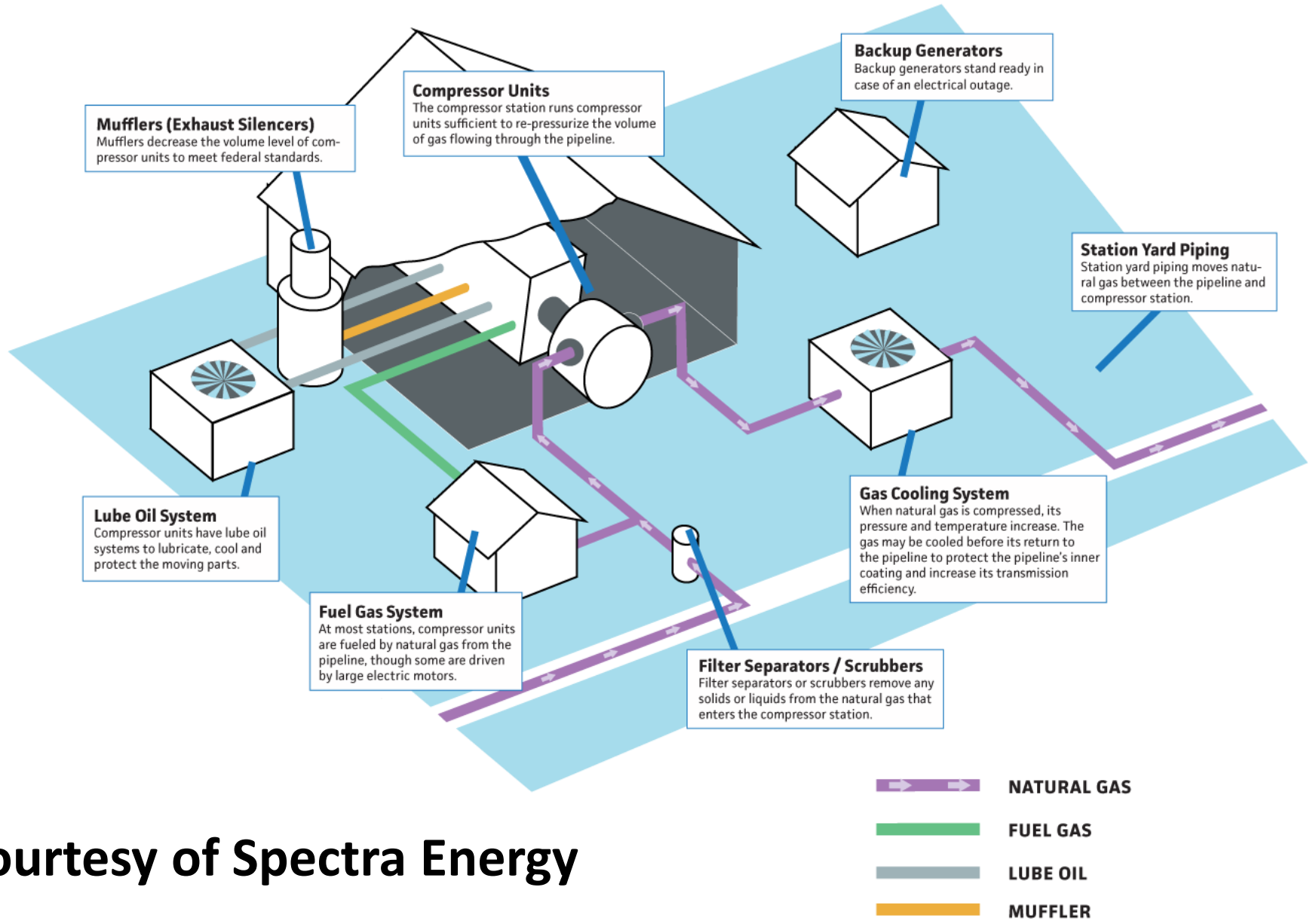
- **Operating Pressure of the Pipeline *2**

The typical pressure may range anywhere from 200 psi (pounds per square inch) to 1,500 psi. This wide variation is also due to the type of area in which the pipeline is operating, its elevation, and the diameter of the pipeline. Because of the change in the environment, compressor stations may compress natural gas at different levels. Supply and demand can also be a factor at times in the level of compression required for the flow of the natural gas.

- **Liquid Separation and Filtering at Compressor Stations *2**

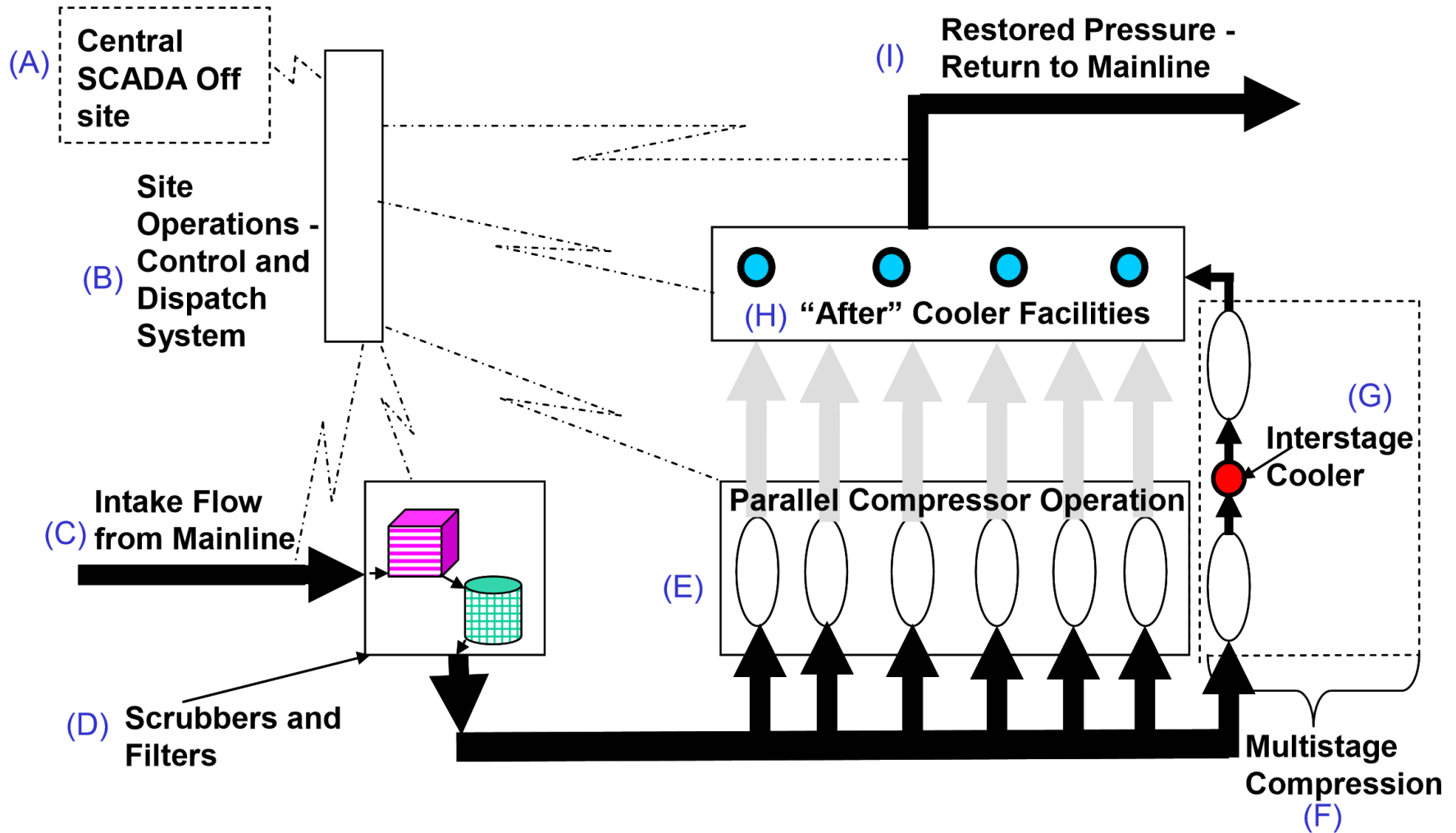
1. Mackenzie Gas Project http://www.mackenziegasproject.com/moreInformation/publications/documents/Compressor_Stations.pdf
2. STI Group <http://setxind.com/midstream/compressor-stations-what-how-why/>

Compressor Station – Nice Diagram



Courtesy of Spectra Energy

Parallel Compressors



Courtesy of DOE

Williams Marketed STA206 Picture



Artists Rendering
For discussion only
Subject to change

Compressor Station 206: Option B



Truescape

Compressor Station – Real Pictures



STA515- White Haven, PA 18661 – Bing Maps

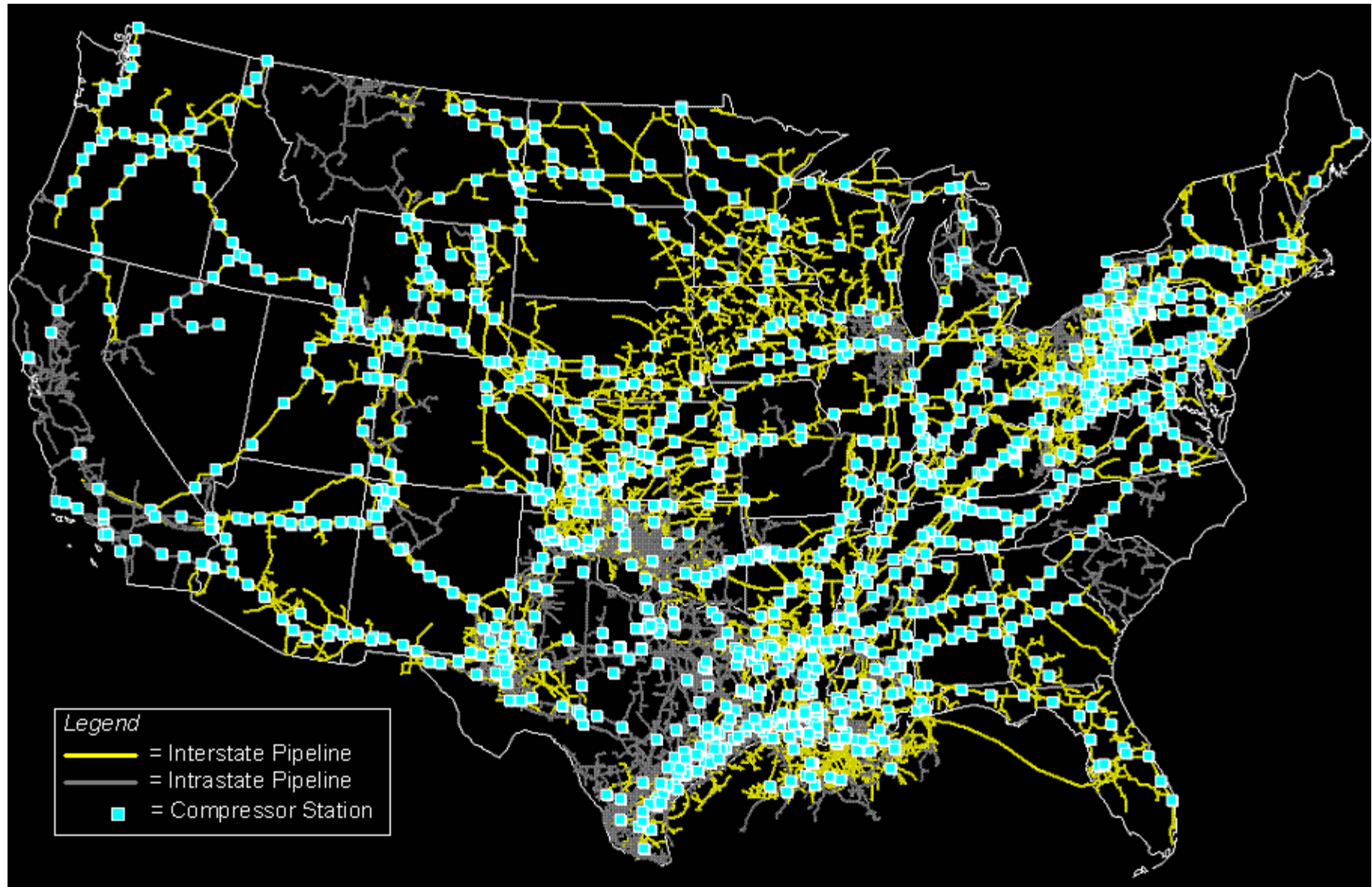
Stop for a minute to take in the picture



STA 515 - White Haven, PA 18661 – Google Maps

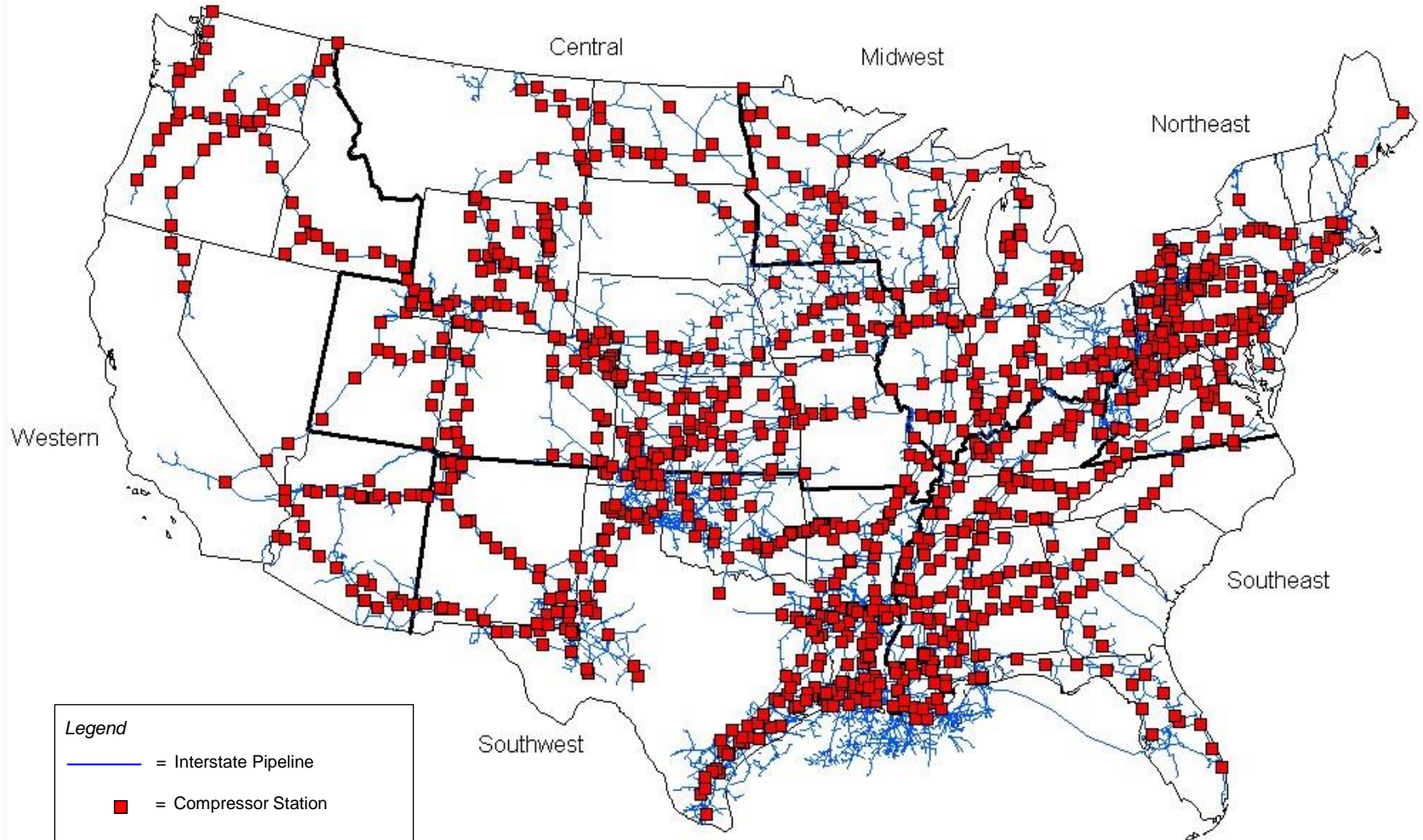
Updated picture – can you spot the difference?

Map of Compressor Stations



Map of Compressor Stations

Interstate Natural Gas System Mainline Compressor Stations, 2006 (source EPA)



Note: EIA has determined that publication of this figure does not raise security concerns, based on the application of Federal Geographic Data Committee's *Guidelines for Providing Appropriate Access to Geospatial Data in Response to Security Concerns*

Source: Energy Information Administration, Natural Gas Division,

Natural Gas Transportation Information System, Compressor Station Database.

Williams Projects In NJ Area Only

Project Name	Docket #		Cert Approve	Status	Compressors
	Pre-Filing	Cert-Filing			
Northeast Supply Expansion	PF16-5			Pre-filing ending March 2017	STA200 - Add 21,000hp - Elec STA206 - New 32,000hp - Qty 2 Mars 100
Atlantic Sunrise Project	PF14-8	CP15-138	2/3/2017	2/17/2017 Williams submits implementation plan	STA605 - New 30,000hp - Elec STA610 - New 40,000hp - Elec STA517 - Add 16,000hp Mars100 STA520 - Add 16,000hp Mars100 STA190 - Add 30,000 NG Bidirect - 190 , 185, 170, 160, 150, & 145
New York Bay Expansion		CP15-527	7/7/2016	2017-02-15- Construction initiated	STA200 - upr 2,140hp (total 33,000hp) STA303 - upr 2,500hp - Elec STA207 - Add 11,000 - Elec
Garden State Expansion Project		CP15-89	4/7/2016	1/5/2017 NJDEP requires add permits	STA203 - New 30,500hp - Elec STA205 - upr 16,000hp (unit 1&2) - Elec STA205 - upr 24,000hp (unit 3) - Elec
Northeast Connector Project		CP13-132	5/8/2014	In service 07/19/2016	STA195 - Inc 6,540hp STA205 - inc 5,000hp - Elec STA207 - inc 5,400hp - Elec
Rockaway Delivery Lateral Project	PF09-8	CP13-36	5/8/2014		
Leidy Southeast Expansion Project	PF13-5	CP13-551	12/18/2014	In service 01/08/16	STA520 - New 20,500hp NG STA517 - Add 30,000hp NG STA517 - Rep 12,600 w 16,000hp Mars100 STA515 - Add 16,000hp MARS 100 STA205 - upr 9,500 to 10,500hp (unit 1&2)
Virginia Southside Expansion Project	PF12-15	CP13-30	11/21/2013	in service 09/04/2015	STA165 - qty2 10,915hp Enable bidirectional flow at STA205, STA190 , STA195
Northeast Supply Link Project	PF11-4	CP12-30	11/2/2012	In service 11/2013	STA303 - New 20,000 -Elec (Roseland) STA515 - Add 16,000hp Mars100

Partial Emissions from CP15-138, CP13-551, CP12-30

TABLE 4.11.1-9

From page 392 of Docket CP15-138 Document 20161230-4002(31864559)

Atlantic Sunrise Project FEIS

Summary of Pollutant Potential Emissions from Modifications to Compressor Stations 517 and 520

Facility	Emissions (PTE, tpy) a						
	NOX	CO	VOC	PM10/ PM2.5	SO2	HAPs	CO2e Metric Tons
Station 517 (MARS 100, 16,000hp)	34.0	24.5	3.5	4.0	0.7	0.6	71,308.0
Station 520 (MARS 100, 16,000hp)	34.7	24.5	3.5	4.0	0.7	0.6	71,323.0

TABLE 2.7.3-4

From page 168 of Docket CP13-551 Document 20140811-4003(29706795)

Leidy Southeast Expansion Project - FERC Env. Assessment

Summary of Proposed Modifications (New Sources) Potential to Emit

Source	NOX	CO	VOC	PM10/ PM2.5	SO2	HAPs	CO2e Metric Tons
Station 515 (Mars 100, 16,000hp)	32.6	35.1	4.6	3.9	1.6	0.3	63,374.0
Station 517 (add 33,400hp)	84.6	59.6	10.6	10.2	4.3	1.0	163,757.0
Station 520 (20,500hp)	39.2	46.2	5.4	4.7	2.0	0.9	78,607.0

TABLE 2.7.3-4

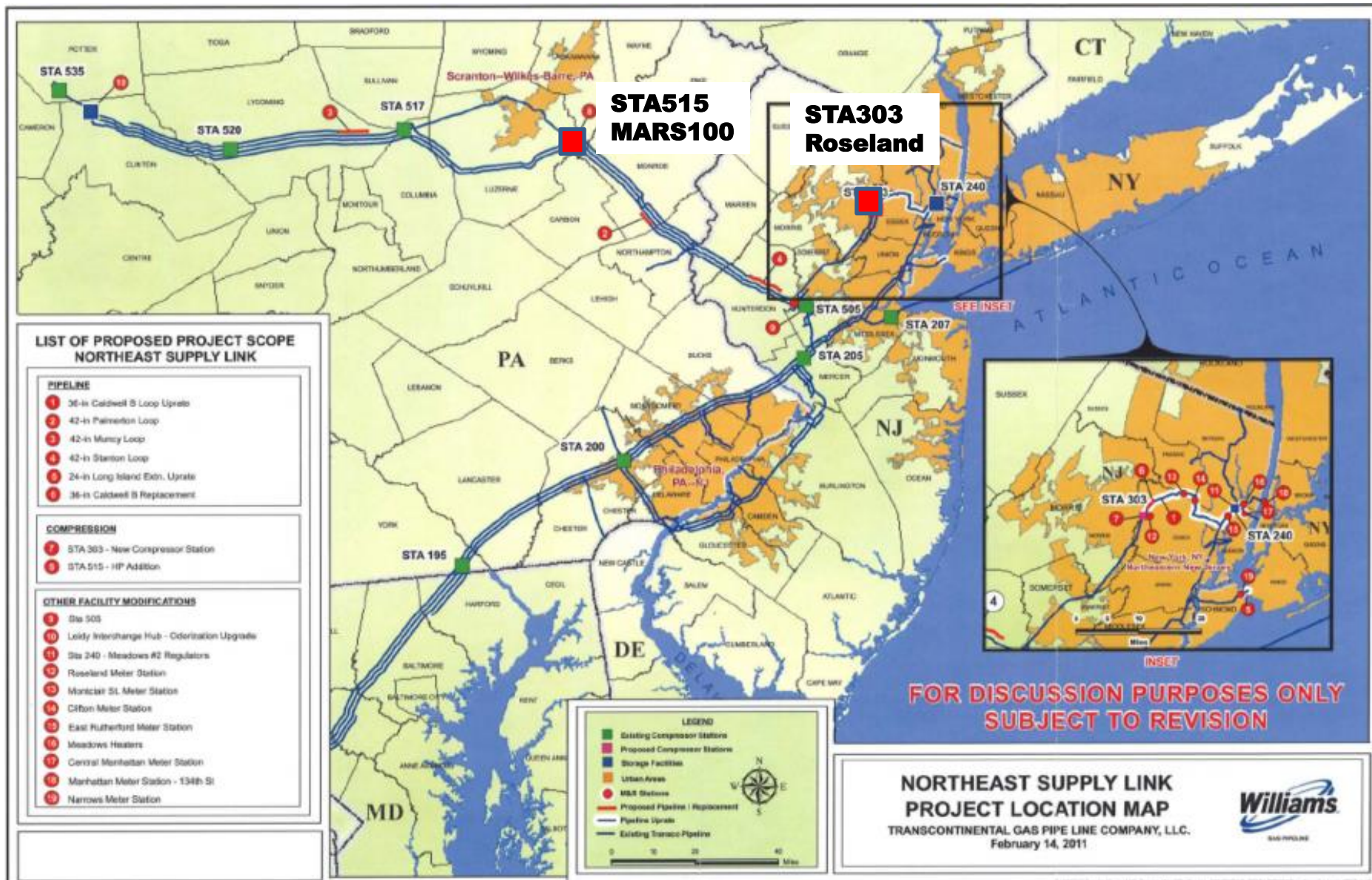
From page 165 of Docket CP12-30, Document 20120801-4001(27463593)

Northeast Supply Link Project Env. Assessment

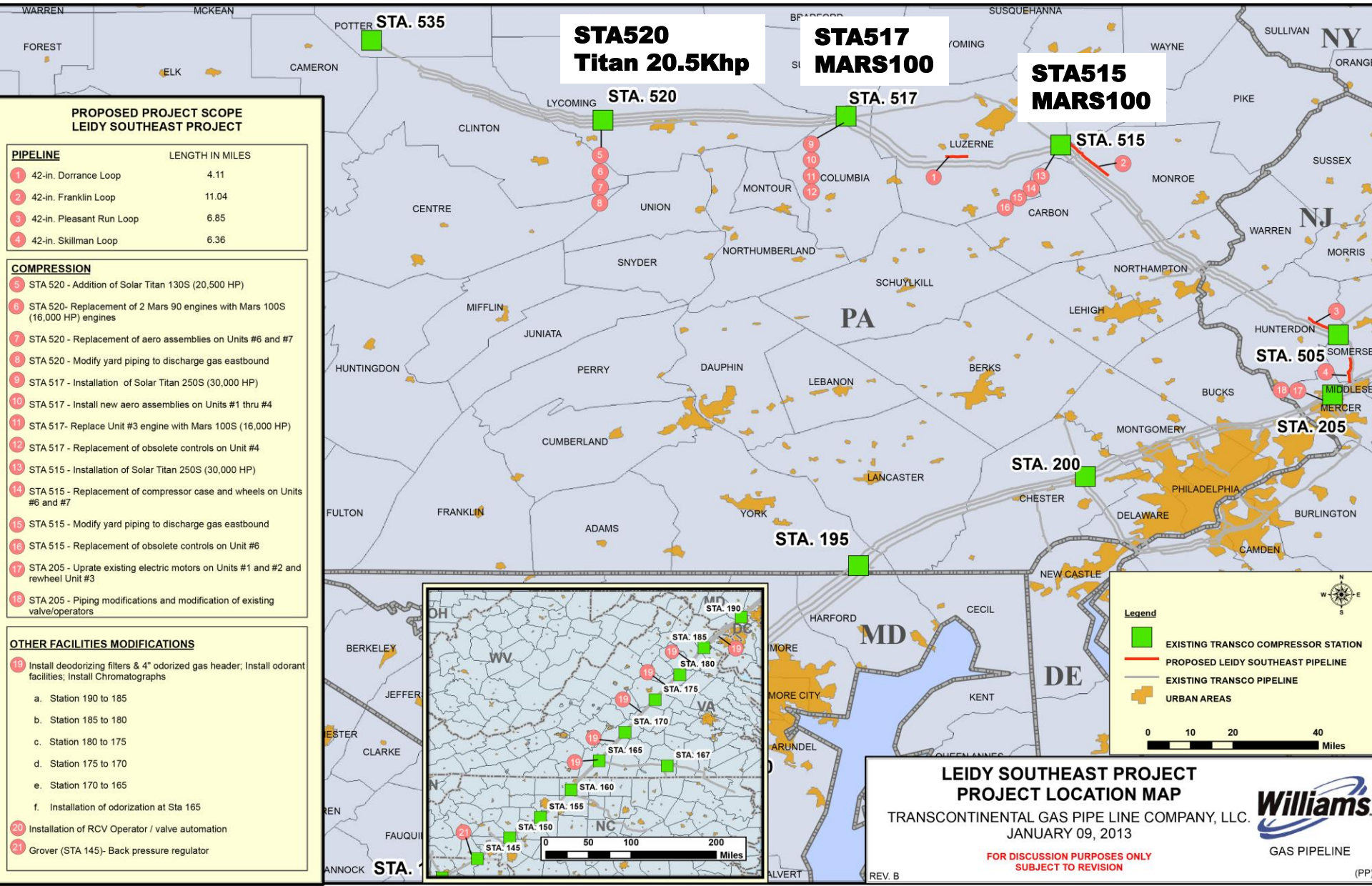
Proposed Potential Emissions – Compressor Station 515

Emissions														
Source	Nox		CO		VOC		SO2		PM 10/2.5		Formaldehyde		Total HAP	
	lb/hr	tpy	lb/hr	tpy	lb/hr	tpy	lb/hr	tpy	lb/hr	tpy	lb/hr	tpy	lb/hr	tpy
STA515 Mars 100	7.6	33.2	7.7	33.6	1.2	5.2	0.4	1.9	0.2	3.6	0.1	0.4	0.1	0.4

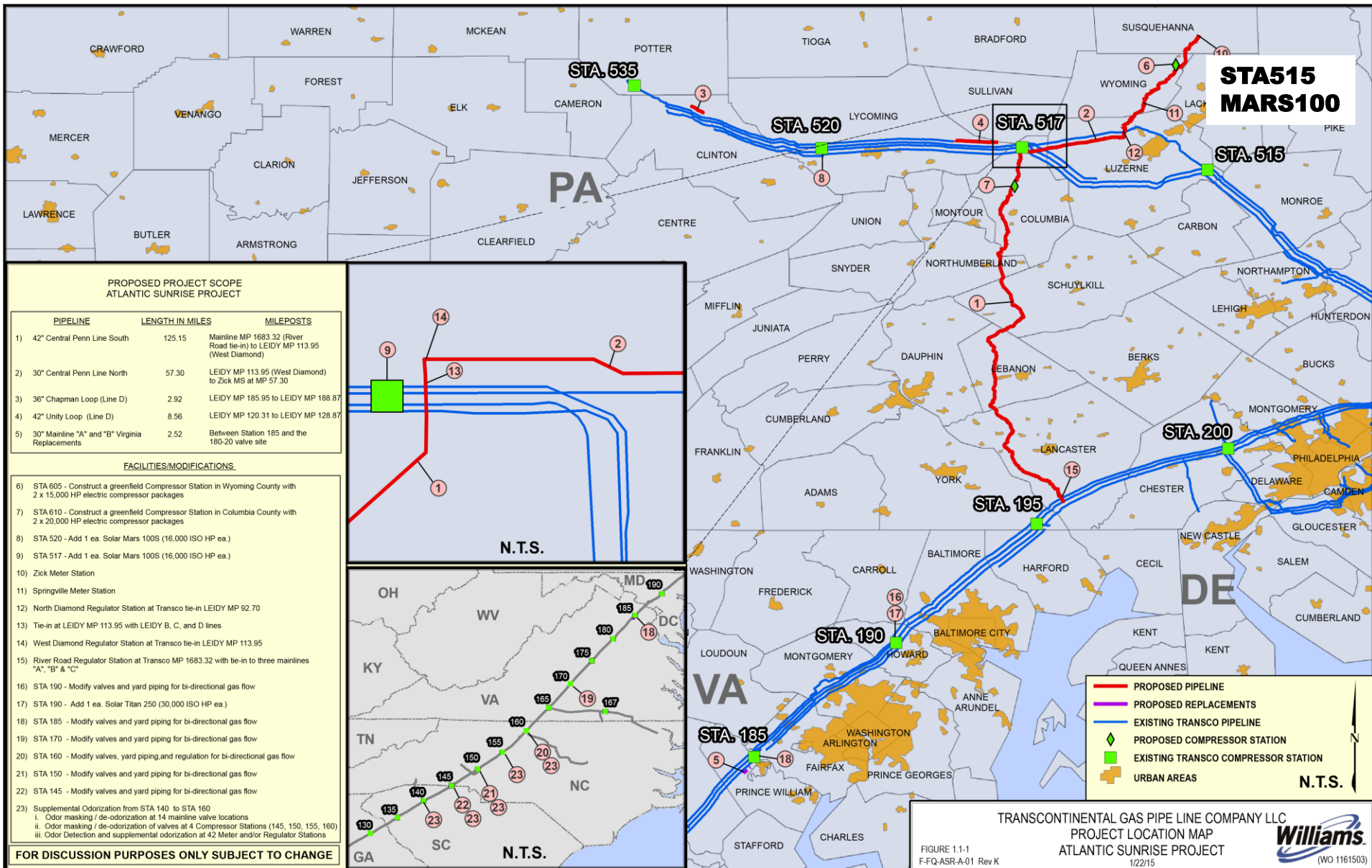
Northeast Supply Link CP12-30



Leidy Southeast Project CP13-551



Atlantic Sunrise Project CP15-138

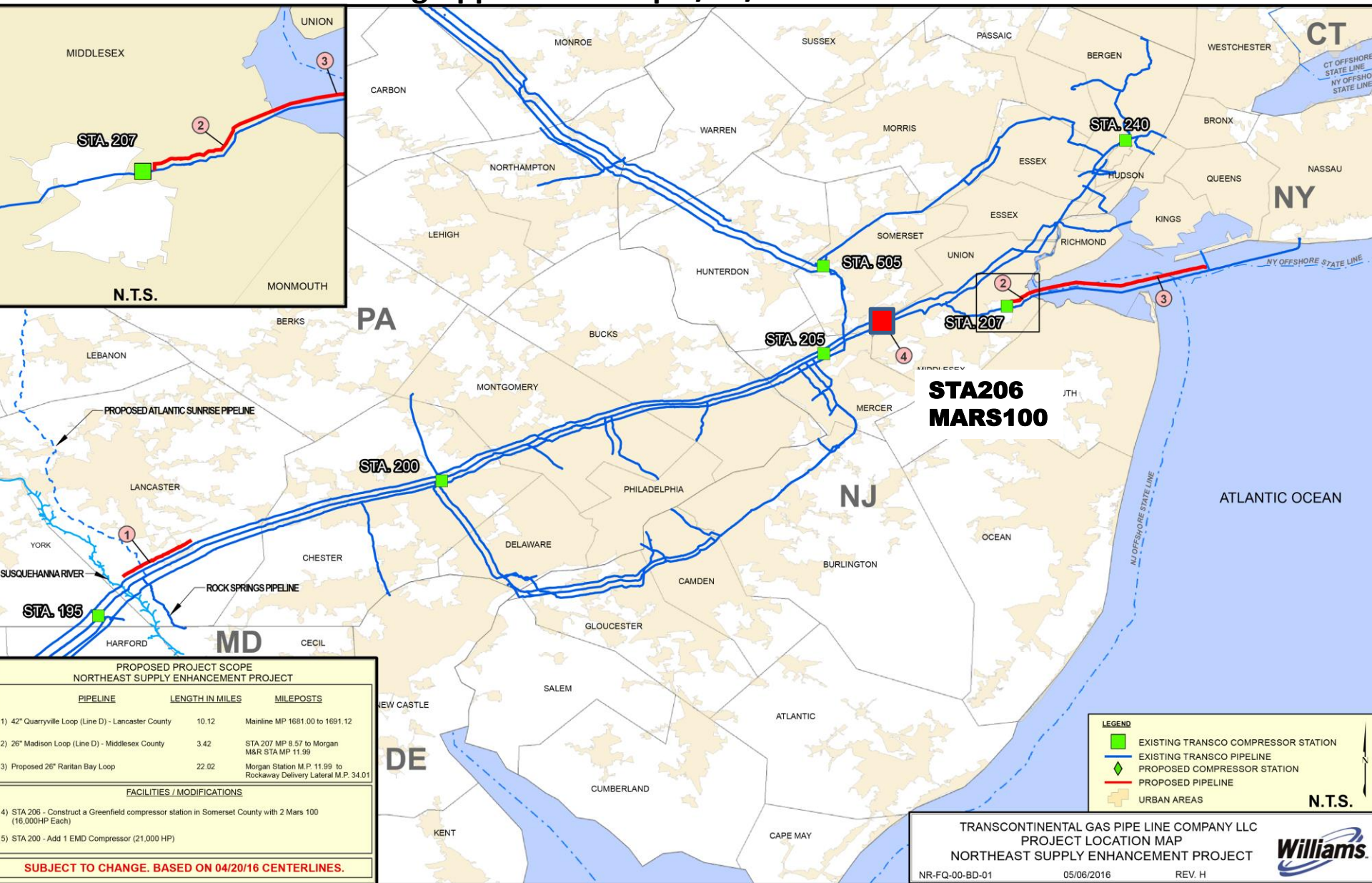


NESE Project Overview

- Project to deliver 400,000 dekatherms/day of nat gas to NYC
- A 10-mile, 42-inch loop of Mainline D in Lancaster County, PA;
- 21,000 horsepower electric powered compressor unit at STA200, Chester County, PA;
- A greenfield (new) 32,000 horsepower Compressor Station 206 in Somerset County, New Jersey near Transco's mainline, consisting of two MARS 100 turbine-driven compressor units;
- A 3.4-mile, 26-inch loop from Compressor Station 207 downstream to the Morgan M&R Station in Middlesex County, NJ (onshore);
- A **23.4**-mile, 26-inch loop of the Lower New York Bay Lateral from the Morgan M&R Station Middlesex County, NJ to the Rockaway Transfer Point, NY State waters (offshore); and
- Appurtenant underground and aboveground facilities.


Northeastern Supply Expansion (NESE) PF16-5

Pre-filing Application Map 5/09/2016



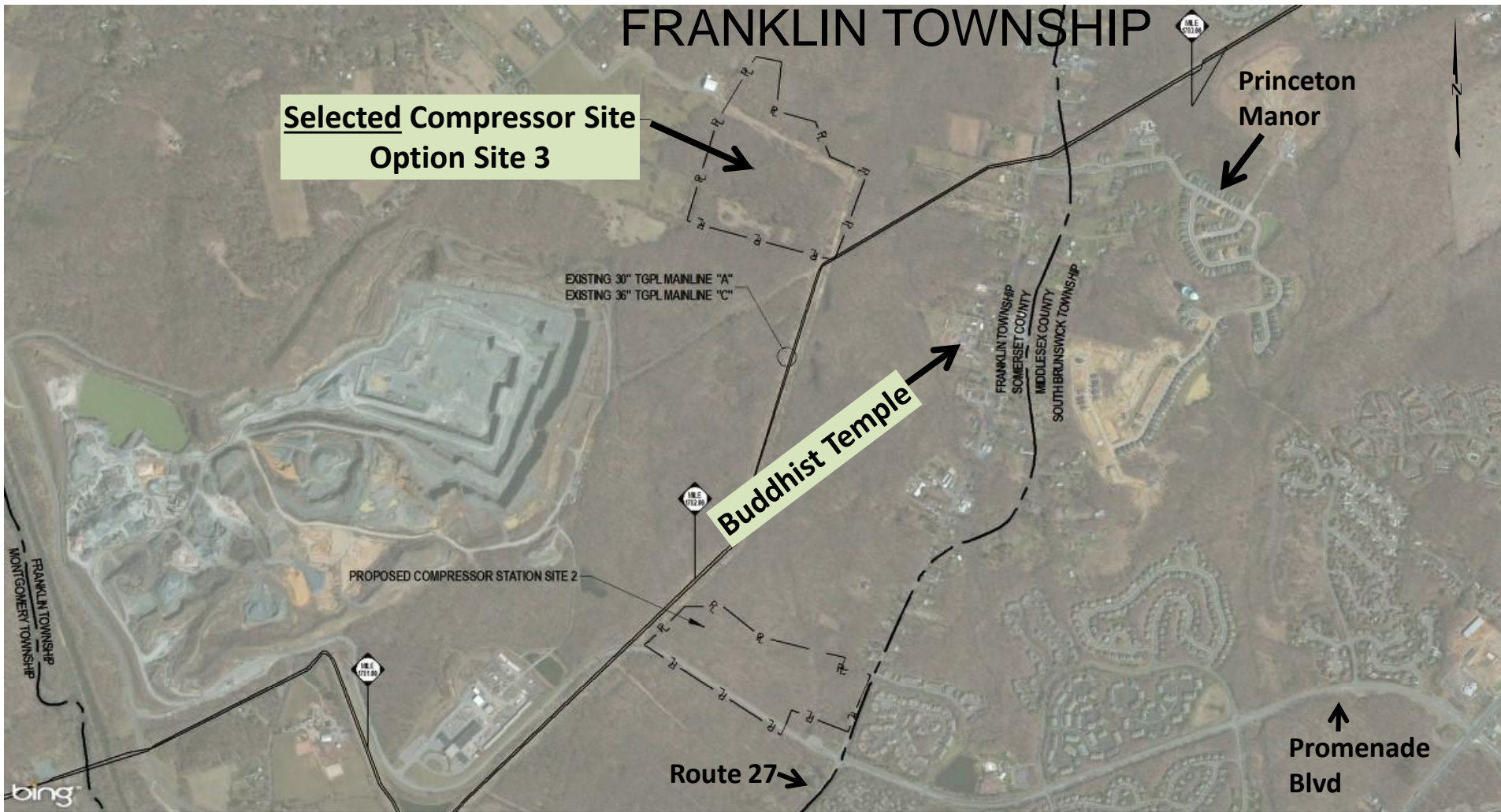
Pre-filing Resource Report Map 11/21/2016



<p align="center">TRANSCONTINENTAL GAS PIPE LINE COMPANY LLC</p> <p align="center">PROJECT LOCATION MAP</p> <p align="center">NORTHEAST SUPPLY ENHANCEMENT PROJECT</p> <p align="center">PENNSYLVANIA, NEW JERSEY, NEW YORK</p>				
DRAWN BY: AL CHECKED BY: JM APPROVED BY: NO: 1000891	DATE: 11/17/2016 DATE: 11/17/2016 DATE: NO: 	ISSUE FOR BID: NA ISSUE FOR CONSTRUCTION: NA DRAWING NUMBER: DATE: 	SCALE: 1:600,000 Project features ver13	

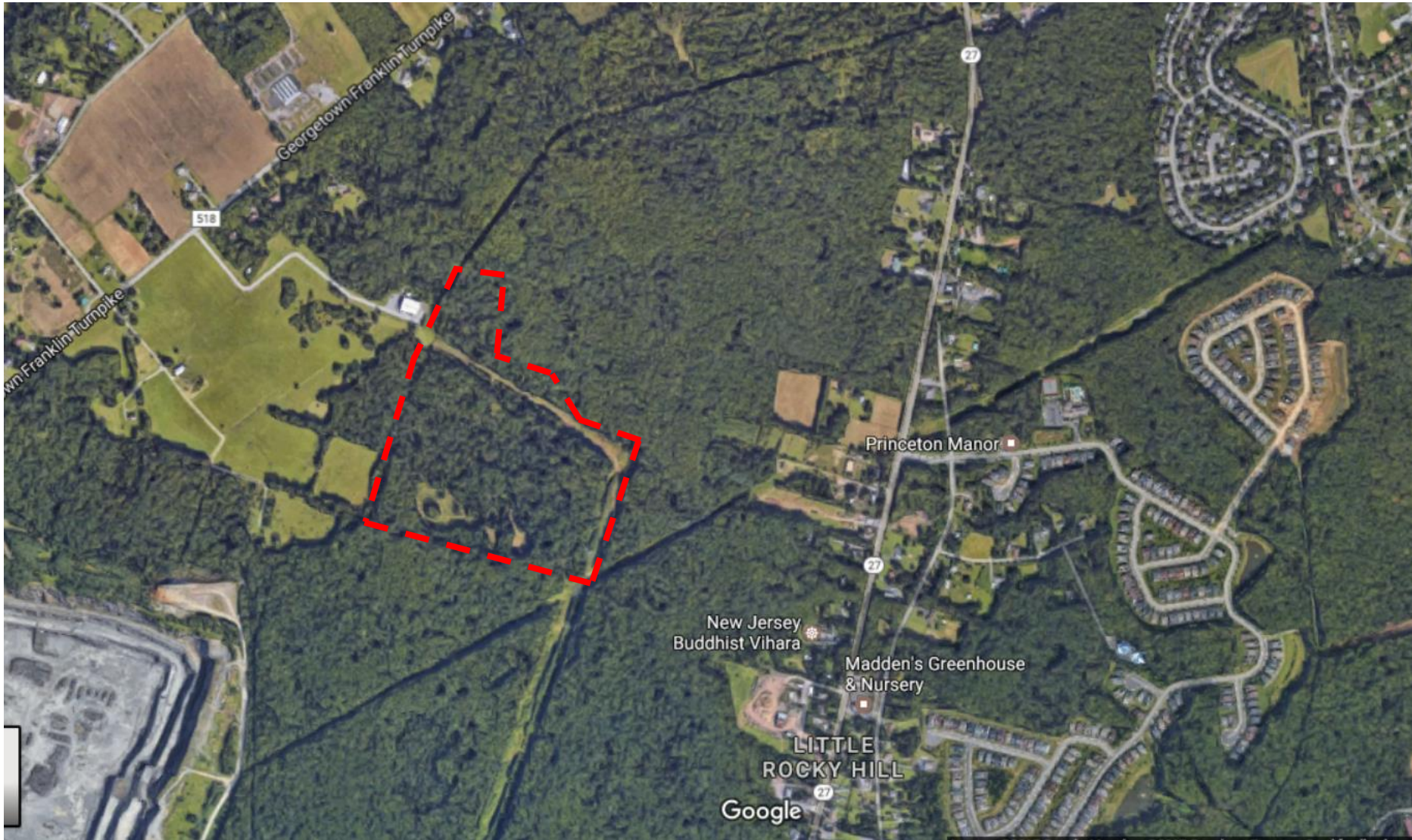
NESE Proposed STA206

Pre-filing Resource Report Map 11/21/2016



Stop for a minute to take in the picture

NESE Proposed STA206



Updated picture – can you spot the difference?

2017-01-10 FERC Status Update

PURPOSE

The purpose of this mailing is to provide you with an update on the environmental review of the planned Northeast Supply Enhancement Project (the Project), explain the Federal Energy Regulatory Commission (FERC or Commission) environmental review process, clarify the issues identified to date, and give you an idea of what is next in our process.

PROJECT DESCRIPTION

Transcontinental Gas Pipe Line Company, LLC (Transco) is planning to construct and operate an expanded interstate natural gas pipeline system in Pennsylvania, New Jersey, and New York. The Project would involve the construction of about 10.2 miles of 42-inch-diameter loop pipeline in Pennsylvania (Quarryville Loop), about 3.4 miles of 26-inch-diameter loop pipeline in New Jersey (Madison Loop), and about 23.4 miles of 26-inch-diameter loop pipeline in marine waters of New Jersey and New York (Raritan Bay Loop), as well as modifications to existing Compressor Station 200 in Pennsylvania and installation of new Compressor Station 206 in New Jersey. Collectively, the facilities would provide 400,000 dekatherms per day of incremental firm transportation capacity to National Grid at the existing Rockaway Transfer Point in Lower New York Bay beginning in the 2019/2020 heating season. The Project's facilities would also include mainline block valves, pig launcher and receiver facilities, and ancillary facilities (e.g., access roads, contractor/pipe yards).

WHERE WE ARE IN THE ENVIRONMENTAL REVIEW PROCESS

The FERC is the lead federal agency responsible for conducting the Project's environmental review. In compliance with the National Environmental Policy Act, the FERC will prepare an environmental impact statement (EIS) for the planned Project. We started our review of the Project in May 2016 when we approved Transco's request to use the FERC pre-filing process (Docket No. PF16-5). Local, state, and federal agencies have been invited to participate as cooperating agencies in the preparation of the EIS and, to date, the U.S. Army Corps of Engineers and U.S. Environmental Protection Agency have agreed to be cooperating agencies.

As indicated in the Environmental Review Process chart, we attended four company-sponsored open house meetings in the Project area in June 2016, and we issued a Notice of Intent to Prepare an Environmental Impact Statement (NOI) on August 24, 2016. The NOI was mailed to over 1,800 stakeholders including affected landowners, elected officials, regulatory agency personnel, Native American tribes, non-governmental organizations, and others. The NOI requested environmental comments on Transco's proposal and announced the date, time, and location of four public scoping sessions in the Project area to receive verbal comments from interested parties. The scoping sessions were held in September 2016 and were attended by approximately 350 people. A total of 147 of the attendees provided verbal comments during the scoping sessions, including 127 people at the Somerset, New Jersey session near planned Compressor Station 206. In addition to receiving verbal comments during the scoping sessions, over 1,200 letters providing comments on the Project have been filed on the Project docket.

ISSUES IDENTIFIED

The following concerns have been raised during scoping on the Project:

- Effects on surface water and groundwater resources
- Effects on wetlands
- Effects on vegetation
- Effects on offshore aquatic ecosystems
- Effects on special status species and their habitat
- Effects on cultural resources
- Effects on residences, schools and other land uses
- Effects on traffic
- Socioeconomic effects
- Effects on air quality and noise
- Public safety
- Project alternatives
- Cumulative effects
- The purpose and need for the Project

FERC's Environmental Review Process



RECEIVED
NOV 14 2016

November 9, 2016

OFFICE OF THE CHAIRMAN

The Honorable Frank Pallone, Jr.
U.S. House of Representatives
Washington, D.C. 20515

Dear Congressman Pallone:

Thank you for your September 22, 2016, letter regarding Transcontinental Pipeline Company L.L.C.'s (Transco) planned Northeast Supply Enhancement Project in New Jersey, New York and Pennsylvania (Docket No. PF16-5-000).

On August 24, 2016, Commission staff issued a *Notice of Intent to Prepare an Environmental Impact Statement for the Planned Northeast Supply Enhancement Project, Request for Comments on Environmental Issues, and Notice of Public Scoping Sessions*, which initiated a standard formal 30-day public scoping period and indicated the locations, dates, and times for the public scoping sessions. The Commission staff conducted four public scoping sessions for this project. The scoping session locations were selected to be convenient for the greatest number of people who might be interested in the project.

While scoping sessions are a valuable tool for us to receive comments from the public, they are only one of several ways for interested parties to bring their concerns to the attention of the Commission. Interested residents or other stakeholders may file written comments with the Commission. Those comments will receive the same attention and scrutiny as comments received at the public sessions. In addition, we accept and will address comments made after the end of the scoping comment period. I encourage you and your constituents to continue to participate in the review of the project and to file any comments that you believe will help the Commission consider this planned project. Comments raised at scoping sessions and filed throughout the environmental review of this project, including your concerns about impacts on landowners, recreation, and marine wildlife, will be addressed in the Commission environmental impact statement. Additionally, there will be an opportunity for you and your constituents to comment on the draft environmental impact statement when it is completed.

As in any Commission matter, please be assured that we strive to make our review of proposals accessible and transparent to the public. If I can be of further assistance in this or any other Commission matter, please do not hesitate to let me know.

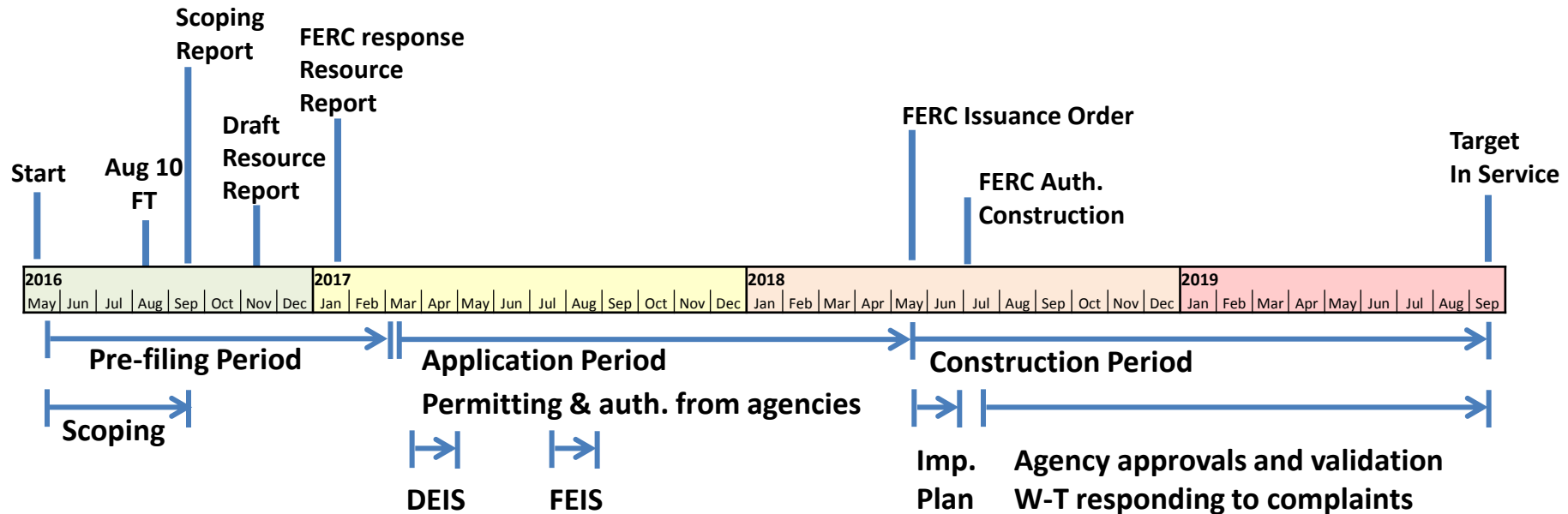
Sincerely,

FERC Encourages Local Agency Engagement

- FERC responds to Pallone's request for additional scoping meetings
- Invites stakeholders (Franklin Township is identified as a stakeholder) for comments.

FERC Timeline

- Missed Opportunity – Scoping
- Still have ***limited*** time for comments in the Pre-filing Period



Big Picture

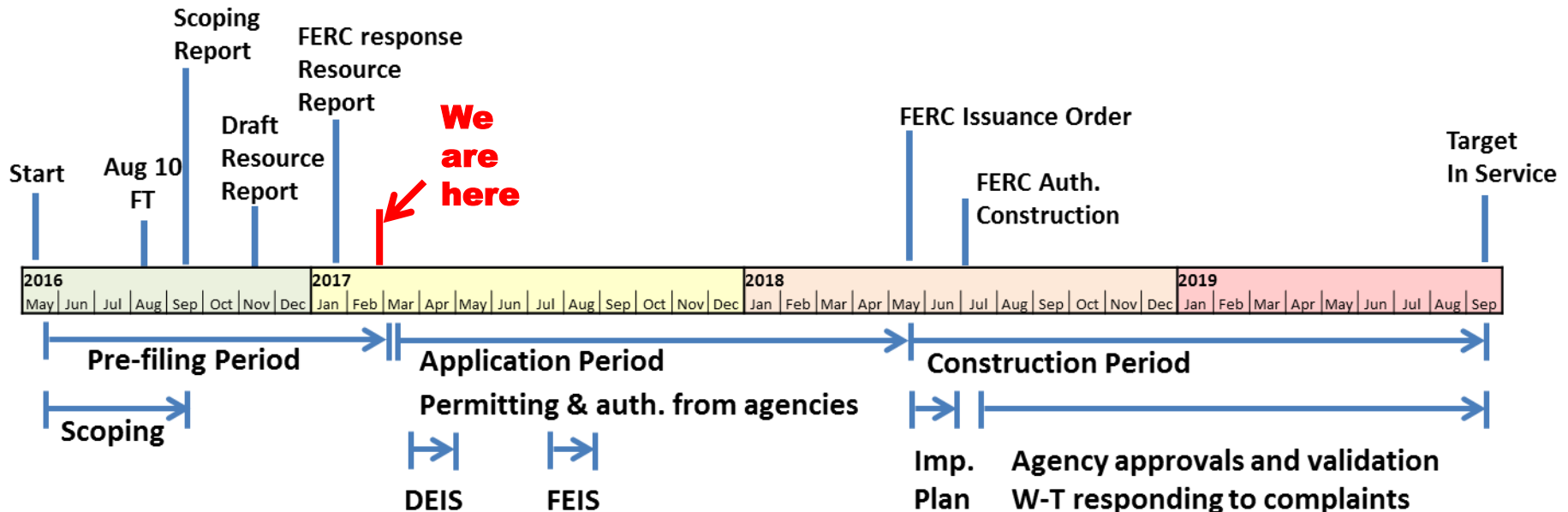
- We are the big picture
- As long as we do nothing, this risk, threat and health impact will increase.
- WE need your involvement to make a difference
 - Residents
 - Organizations
 - Municipalities
 - State and Federal elected officials

The priority and focus needs to urgently start mobilizing to fight the Northeastern Supply Enhancement Project

Franklin Township Task Force Steering Committee

Part 2

You can make the Difference



Is there a Pathway Forward?

Residents

It requires **ACTIVE** community involvement

- Filing to FERC
- Supporting and driving Municipalities (volunteer, investigate, contribute)
- Working with Organizations
- Getting the word out and sustaining the push

Municipalities & NGOs

- It requires municipality engagement and coordination
- It requires the support and coordination with Organizations
- Engaging municipal departments to prepare for DEIS
- Submitting **ALL** dialogue and expectations from Williams to FERC

State & Federal

- Coordination with State legislatures
- Federal FERC reps consulting with Township Task Forces and municipalities
- Pressure on state permitting departments
- State to 'tee up' home run pitches for Federal
- Federal to hit home run submissions to FERC, NJ departments

We can learn from other projects, but it takes all of us working together

Sample Actions

- FT Documenting January 19 meeting with Williams
- Demanding full audit inspection of pipeline to identify pre-1970 welds and integrity report
- Onsite chemical exhaust monitoring tied to publicly available website for all chemicals
 - NOX, CO, VOC, PM10, PM2.5, SO2, HAPs, CO2,
- Onsite Methane (CH4) monitoring tied to public

We need help developing and engaging municipalities to engage this project and lay the groundwork for our State and Federal elected officials to engage and hit the 'home runs.'

How you can have Immediate Impact

- **Conserve energy**
 - Use less natural gas in your home
 - Lower the heater when you leave the house or at night
- **Waste less energy**
 - Instead of heating the entire house to comfort level, heat selected areas and keep the main house heater a little lower for the rest of the house
 - Make sure windows are tightly shut
- **Use alternative energies**
 - Enroll into PSEG Solar Loan Program
 - Use the sunlight to warm up the house by opening curtains
- **Submit comments to FERC public**
 - Contact Franklin Township Task Force Steering CMTE for help
- **Tell your township and elected officials**
 - To get the municipality involved
 - That you want to help

Thank You

- **Questions?**
- **Contact Franklin Township Task Force Steering Committee**

stopftcompressor@yahoo.com